

Summer 2025

Latest news from
Elmsbrook



ELMSBROOK

N.W. BICESTER

Neighbourhood updates

1



A2Dominion Community Awards

A2Dominion owns and manages over 38,000 homes and works with customers and communities across London and southern England. Baring this in mind, we are thrilled that three of the winners in this years A2Dominion Community Awards, were from Bicester. The annual Awards recognise individuals, groups and projects which go above and beyond to support our customers and communities.

Rose Hunt and Jeannie Neal won 1st place in the Communities Together Award for running the beloved Elmsbrook pop-up café since 2019. Not only were they awarded 1st place and £100

of shopping vouchers each, but they were also granted an additional £300 of Kick Start Funding from A2Dominion to support the Pop-Up Café.

Rob Fellows was awarded 2nd place in the Community Contribution Category and awarded £75 worth of shopping vouchers for his long-standing support and leadership at Elmsbrook.

Bicester Bike Users Group were awarded 2nd Place in the Communities Together Award for championing safe and accessible cycling in Bicester and received £65 of shopping vouchers.

Congratulations to all of you and THANK YOU on behalf of the community for all that you do!



All winners were invited to receive their awards on June 12 at a special presentation ceremony at the Beethoven Centre in Ealing hosted by Dawn Wightman, A2Dominion's Director of Customers and Communities, and Kate Gascoigne, Chief Customer Officer.

Dawn Wightman said: "The nominations we received this year were a powerful reminder of the incredible things that happen when people step up to support their neighbours, whether through volunteering, organising local activities, or simply being there for someone in need. Thank you to those who nominated and congratulations to our amazing winners and runners up."

Full list of the Community Awards winners [here](#).

Neighbourhood updates



A message from Elmsbrook Community Organisation

Unfortunately, Elmsbrook Community Hub won't open this Summer, as originally hoped, due to delays with third party solicitors. However – it's so very almost there now, and we're hoping to have it up and going at the start of September.

JUST TO REMIND YOU WHAT THE HUB IS FOR...

Its primary goal is to provide a space to bring the community together. This could be for things such as events, clubs, celebrations, sports and fitness activities, entertainment or educational activities. There are so many wonderful people on Elmsbrook, it's about creating activities where people can enjoy times with family, friends and neighbours.

We already have lots of Elmsbrook-based groups and clubs that anyone in the community can join:

- Elmsbrook Gardening Group (EGG)
- Knit & Natter
- Board Games group
- Card Games group,
- Book Club
- Elmsbrook Musicians Union (EMU!)
- Elmsbrook United 5-a-side Football
- Cycling Club
- Hope Church

And some groups who will move to the hub when it opens:

- Yoga
- Pilates
- Qi Gong/Tai Chi
- Ballroom dancing

There are others that we hope will start up once the hub is up and running:

- Mother & Baby Group
- Running Club
- Youth Club
- Art and Crafts groups
- Bridge and Chess groups

Some of these we already have 'leaders' for, and others we will soon be asking for people to join/lead/support them. There's also potential for lots more activities such as parent/baby/toddler/child groups, Film Club, Swap Shops, Dog Play group... and whatever else people want to set up!

We have a large Main Hall, and a smaller Community Room (22 feet by 22 feet). Our aim is to keep the costs as low as possible and ideally keep community-led, open-to-all events free. The space can also be hired for private functions such as meetings, business events, children's parties. We will make it as easy as possible to make a booking.

So – while we wait for the legal necessities to be finished, please have a think about what sort of clubs or activities you're interested in joining! If it's not in the list above, get in touch with someone on the ECO committee (see www.elmsbrook.org/contact/) and propose it!

As soon as we finally have custodianship of the Hub, from Cherwell District Council, we will be holding a big Opening Event – likely to be a Saturday afternoon and evening, where everyone can come along. There'll be food, entertainment and more. Watch this space... we'll announce full details as SOON as we can. Thank you.

PS: Next door to the Hub will be **THE ELMSBROOK COMMUNITY CAFE**. Plans are afoot for something awesome. We'll announce more as soon as we can. Please be patient and watch this space!



Neighbourhood updates

3



Welcome to our Elmsbrook Bees



Elmsbrook Community Organisation has been keen to introduce bee hives to Elmsbrook for some time, to enhance the developments green and wildlife credentials, provide an income for the

Community Organisation from the sale of highly nutritious raw honey and, in due course, facilitate bee life awareness sessions for residents. As a result, they commissioned a survey in conjunction with beekeepers from A&T Hives, Bicester, to assess the feasibility of several locations across Elmsbrook and recommended their preferred location as being in an open space opposite the Forest School. A successful application was made to A2Dominion for some funding for the project and Smarter Services provided labour free of charge to construct an essential enclosure for hives. As a result, A&T hives, who are experts in this field and committed to widening the

honeybee population in our locality, have been busy establishing the hives. They will manage them going forward with the support of Elmsbrook volunteers.

A colony of bees was placed in the hives on 24 May, and since then the bees have been active with eggs being laid, larvae and pupae visible, and stores of honey produced to date has exceeded expectations. The bees need the honey in their first year to survive, establish their hive and build up honey stores, but ECO hope to be able to start selling it to the local community after the harvest next autumn. A second hive has been constructed and a resident colony grown. This hive has only recently been added to our enclosure and will help to build upon our wildlife objectives. Please adhere to the signs and do not disturb the colonies by entering the bee enclosures.

If you want to know more about the hives or to get more involved in the project please contact Steve Goad at elmsbrookcommunity@gmail.com.

Grounds work in phases 3 & 4

You may have noticed that there has been limited work on grounds maintenance over the last few months on phases 3 and 4. We can only apologise for this. Unfortunately, this was due to an issue with a payment from Crest however it has been resolved and we can confirm that the grounds maintenance work is now being picked up by Smarter Services and will be brought up in line with the specification.

Selling of Freehold and Leasehold Properties

If you are selling your home, please ensure that all questions and enquiries related to the sale of your properties and refunds or overpayments for Service charges, go through your Solicitor and our [A2Dominion Sales team](#).

Bins and bin areas

A reminder that bins should not be left out in the bin areas after refuse collection day. Please make sure you bring them back into your garden or put them back in your bin store as required by the Estate Regulations.

We are still finding rubbish and bulk items dumped in the bin areas rather than being disposed of by residents themselves. If we need to remove these items, the cost of this will be added to service charges. Please therefore take any excess rubbish or bulk items to the tip in Ardley. You can book your free slot [here](#).

Neighbourhood updates

Anti-Social Behaviour

Unfortunately, we have had several reports of Anti-social behaviour across the estate including racism, bullying, drug abuse and basic disregard for equipment and property. Should you encounter any such anti-social behaviour, please report it to the police in the first instance on 101. You will be issued with a Crime number. Your next step is to report it on the A2Dominion website [here](#). There is a dedicated team that deals with this. If the anti-social behaviour is noise related such as particularly loud music from a party going beyond the acceptable time of 11pm, (not basic living noises), please report it [here](#).

How to Report Issues or send emails to A2Dominion

We are changing our systems at A2Dominion to improve how we handle customer enquiries. If you would like to contact us by phone, please call our Customer Services team on 0800 432 0077. If you would like to email us, you can do it through your A2Dominion account at 'My Account'. This is where you can also access all of the important information in relation to your home so if you haven't already set this up, please do so now.

You can access my Account at [here](#), click on 'sign in', on the left (if you have already set up your account), or 'register' for an account, on the right (if you don't already have one).

Please note that if you enter your details incorrectly 3 times, your account will be blocked and you will have to contact Customer services an A2Dominion to reset it at customer.services@a2dominion.co.uk. We hope that going forward this will improve the way we handle all of the contact we have with our customers.

Why not hire an Elmsbrook Brompton bike over the summer, free of charge?

We have several Brompton bikes in the lockers next to the new Community Hub, which are available to Elmsbrook residents free of charge for 2 weeks. It's an environmentally friendly and easy way, to pop into Bicester along the cycle path, or into Oxford on the train.



Advantages of a Brompton bike include that they are:

- Compact and fold away making them easy to carry, store or put on a luggage rack on a train
- Comfortable to ride.
- Adjustable with different handlebar options and seat heights
- Light so you can pick it up with one hand
- Very easy to use and can be folded and unfolded in seconds.

To find out more or to request to hire them, please email elmsbrooktpc@motion.co.uk.

FREE bike security packs

Did you know that if you register your bike on the BikeRegister website (the National Cycle Database) at www.bikeregister.com, you could be reunited with it in the event of it being stolen? The BikeRegister database is used by the Police to search for stolen and recovered cycles. We have a number of BikeRegister membership packs that contain a tamper resistant label with a QR code to stick to the frame of a cycle. This can then be scanned with a smart phone to identify your bike on the BikeRegister website.

If you would like a free membership pack with a security label for your bike, please email your request to ElmsbrookTPC@motion.co.uk.

Risk of Fires

As the weather and climate is changing, we are likely to face hotter Summers at Elmsbrook. Please take care to adhere to the government warnings about cigarette butts not being dropped and make sure they are totally put out to mitigate the risk of fires.

Community projects and activities

5

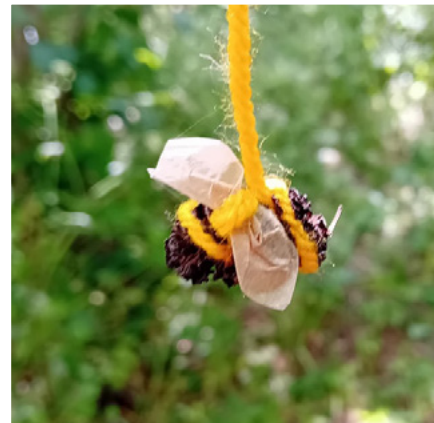
Looking back on activities at Elmsbrook

Our Elmsbrook Pop Up Forest School sessions have continued to be as popular as ever. In April we had our Easter Pop up School where all who came along had an eggcellent time with egg hunts, egg decorating and practiced their fire skills by cooking hot cross buns on the fire

In May there was a Marvelous Mini beasts Pop Up Forest School where children went in search of minibeasts and made elderflower fritters. They also made alder bees to take home and pooters to Hoover up bugs and beasties for further investigation.

In July the children made nature crowns, and collected rain water off the tarp. The children loved it so much that they did a rain dance to encourage more rain to come! They made paracord bracelets using their knots skills and delicious refreshing lemonade.

Over the last 3 months Bumbles Creatives have run three Bumbles Crafty Hive sessions for 7-12 year olds, a family crafting session and an Adult Macrame session, all of which have been great fun.



What's up and coming

6



Elmsbrook Pop-Up Forest School

Music Makers

Friday 15th Aug 2025

9.30 - 11.30 AM - 5 YEARS AND UNDER
12.00 - 2 PM - 5 + YEARS

CHARLOTTE AVE, BICESTER, OX27 8AS

£5.00 PER CHILD, SUBSIDISED FOR LOCAL RESIDENTS BY A2DOMINION

ADULTS MUST REMAIN WITH EACH CHILD.

TO MAKE A BOOKING, VISIT WWW.MUDDYFEETTRAINING.CO.UK.



Elmsbrook Pop-Up Forest School

Clay Creations

Friday 22nd Aug 2025

9.30 - 11.30 AM - 5 YEARS AND UNDER
12.00 - 2 PM - 5 + YEARS

CHARLOTTE AVE, BICESTER, OX27 8AS

£5.00 PER CHILD, SUBSIDISED FOR LOCAL RESIDENTS BY A2DOMINION

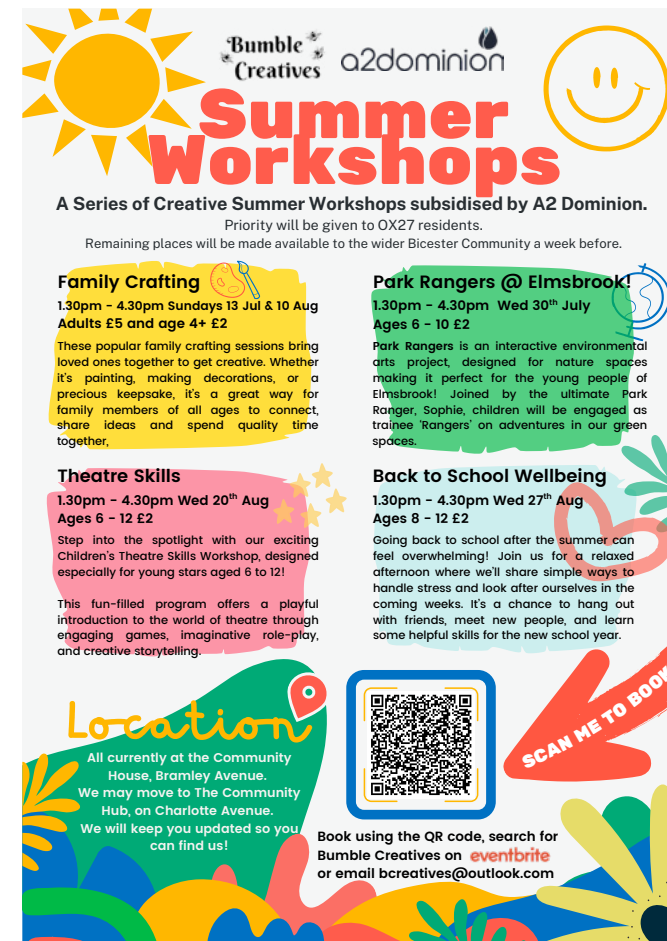
ADULTS MUST REMAIN WITH EACH CHILD.

TO MAKE A BOOKING, VISIT WWW.MUDDYFEETTRAINING.CO.UK.



Pop Up Forest Schools

Our pop Up Forest Schools for under 5's and over 5's are very popular. To make sure of a place, please book on early at muddyfeettraining.co.uk.



Bumble Creatives a2dominion

Summer Workshops

A Series of Creative Summer Workshops subsidised by A2 Dominion.

Priority will be given to OX27 residents.
Remaining places will be made available to the wider Bicester Community a week before.

Family Crafting
1.30pm - 4.30pm Sundays 13 Jul & 10 Aug
Adults £5 and age 4+ £2
These popular family crafting sessions bring loved ones together to get creative. Whether it's painting, making decorations, or a precious keepsake, it's a great way for family members of all ages to connect, share ideas and spend quality time together.

Park Rangers @ Elmsbrook!
1.30pm - 4.30pm Wed 30th July
Ages 6 - 10 £2
Park Rangers is an interactive environmental arts project, designed for nature spaces making it perfect for the young people of Elmsbrook! Joined by the ultimate Park Ranger, Sophie, children will be engaged as trainee 'Rangers' on adventures in our green spaces.

Theatre Skills
1.30pm - 4.30pm Wed 20th Aug
Ages 6 - 12 £2
Step into the spotlight with our exciting Children's Theatre Skills Workshop, designed especially for young stars aged 6 to 12!
This fun-filled program offers a playful introduction to the world of theatre through engaging games, imaginative role-play, and creative storytelling.


Back to School Wellbeing
1.30pm - 4.30pm Wed 27th Aug
Ages 8 - 12 £2
Going back to school after the summer can feel overwhelming! Join us for a relaxed afternoon where we'll share simple ways to handle stress and look after ourselves in the coming weeks. It's a chance to hang out with friends, meet new people, and learn some helpful skills for the new school year.

Location
All currently at the Community House, Bramley Avenue.
We may move to The Community Hub, on Charlotte Avenue.
We will keep you updated so you can find us!

Location
All currently at the Community House, Bramley Avenue.
We may move to The Community Hub, on Charlotte Avenue.
We will keep you updated so you can find us!

Book using the QR code, search for Bumble Creatives on [eventbrite](https://www.eventbrite.co.uk) or email bcreatives@outlook.com

SCAN ME TO BOOK!



Art and Craft Workshops

A2Dominion have partnered up with Bumble Creatives to offer some art, craft, theatre, park ranger and wellbeing workshops over the Summer holidays. Check out the details here for more information about the activities and how to book.

What's up and coming

7

a2dominion

smarter
services

Tallest Sunflower Competition Win £50, £30 and £20 in garden vouchers

(Sponsored by Smarter Services, your grounds maintenance contractors).



Open to all Elmsbrook residents and Gagle Brook School.

To enter – simply email a picture of your sunflower and tell us how tall it is, to Elmsbrook.customers@a2dominion.co.uk by 10am on Monday 18th August. Make sure you include your name, address and telephone number.

If you email us now to register your interest in the competition, we'll send you a reminder nearer the time to send pictures of your entry.

Elmsbrook Community Organisation (ECO)



ECO held their Annual Get Together Meeting on Monday 28 July. Thank you to all who attended the event to meet their neighbours, share some pizza and have a drink. Rob Fellows gave an update on the Community Hub and ECO took the opportunity to hold their AGM.

Congratulations to Jane Randall who was re-elected as Chair and to Steve Goad who was re-elected as the Vice Chair.

Please check out the [ECO website](#) for more information about the new Committee.

Elmsbrook Gardening Group (EGG)



More than 20 people gathered for the Elmsbrook Plant Swap at the Community House on Saturday 17 May. Coffee and cake were provided by the Pop-up Cafe/Hope Church team. Some people just popped in to swap plants whilst others stayed to chat.

Last year it was dull and rainy which meant the slugs ate everything, this year has however been sunny and very dry. Early planted crops (like potatoes) were able to get their roots down and have been ok, but everything else has needed gardeners to be dedicated and water their crops.

We're planning for an Elmsbrook Harvest Swap in the Community House on Saturday 13 September, 10am-12 noon where we can swap produce and stories about what has done well and what not so well this season! Everyone welcome!

Useful contacts

A2Dominion Customer Services (queries and repairs)

0800 432 0077

Defects for Phase 4 (under 12 months)

0333 136 0360

customerserviceCH@crestnicholson.com

Shimmy support

0330 332 6280

support@carnego.net

Travel Plan Coordinator (travel queries and Brompton bike hire)

ElmsbrookTPC@motion.co.uk

Elmsbrook Community Organisation (ECO)

elmsbrookcommunity@gmail.com

Elmsbrook general customer queries

elmsbrook.customer@a2dominion.co.uk



Elmsbrook Groups

Elmsbrook Games Group

First Tuesday of every month/
every other Wednesday
7pm–10pm at the Community House.
elmsbrookgames@gmail.com

Knit and Natter

Mondays 7pm–9pm
at The Community House.
val.wright@a2dominion.co.uk

Yoga

Wednesdays 6.30pm–7.30pm
at Gagle Brook School.
info@andreaswrenyoga.co.uk

Pilates

Tuesdays 6.30pm–7.30pm
at Gaglebrook School
info@andreaswrenyoga.co.uk

ECO pop up café

Fridays 8.30am–12.00pm.
elmsbrookcommunity@gmail.com

Elmsbrook Book Club

coryrayjohnson@gmail.com

Elmsbrook Gardening Group (EGG)

elmsbrookegg@gmail.com

Dates for your diary

8

30 July

Theatre Workshop - Bumble Creatives

10 August

Family Crafting - Bumbles Creatives

15 August

Pop Up Forest School – Music Makers

20 August

Park Rangers Art Session - Bumbles Creatives

22 August

Pop Up Forest School – Clay Creations

27 August

Back to School Well Being Workshop

13 September

EGG Harvest Swap

1 October

Elmsbrook Surgery 2-5pm